



Ron Smith & Associates, Inc.

Testing Division

www.RonSmithandAssociates.com | testing@ronsmithandassociates.com

Summary Report

Tenprint Comparison Proficiency Test #22201

Issued: July 14, 2022

On March 17, 2022, Ron Smith and Associates, Inc. (RS&A) shipped the Tenprint Proficiency Test #22201. Participants were required to submit their responses no later than June 9, 2022, in order for them to be included in this summary report.

A total of 44 tests were ordered and shipped, with 42 participants returning their responses. This summary report is based on 1176 individual responses (42 participants returning 28 responses each). This test was provided in both hard and/or digital copy format and included four parts: pattern recognition, pre-sentencing packet, warrants or removal/deportation, and AFIS side-by-side comparisons of unknown to known fingerprints.

The results presented in this report reflect whether or not the participants' submitted results agree or disagree with the assigned values garnered from pre-distribution testing and outlined in *The Manufacturer's Report* (Appendix 1). The primary purpose of a Summary Report is to provide an overall documentation of all the submitted responses. It is RS&A's intention to go a step further by providing more meaningful statistical results through analyzing the submitted responses in relation to the demographics obtained from each of the examiners participating in this proficiency test. All results and statistics for this test will be outlined through graphs and charts found in the remainder of this report.

Prior to distribution of this test, all the expected responses were determined, by internal and external consensus, to be either "Identification" or "Exclusion"; however, we are aware that some agencies allow for a conclusion of "Inconclusive" in their casework. In designing this Proficiency Test, there was no intention to force a participant to render a conclusion which goes beyond their considered opinion. To satisfy this option, participants were allowed to enter "Inconclusive" as a response. Due to the fact that a participant's "Inconclusive" response does not meet the assigned values, it will appear as an inconsistent response in this summary report and be incorporated as such in the statistical analysis. It will be up to each agency to decide if the participant's "Inconclusive" response qualifies as being acceptable under their policies and procedures.

RS&A strives to maintain the confidentiality of all its clients and participants. All results are obtained and published using randomly generated test codes. RS&A will not release the identity of any participant without the written consent of the participant and/or the agency involved.

For any questions or further information, please contact our Proficiency Testing Coordinator by emailing testing@ronsmithandassociates.com or by calling toll free at 1-866-832-6772.

Appendix 1

Test Manufacturer's Information

Tenprint Proficiency Test #22201

This proficiency test consisted of four parts: pattern recognition, pre-sentencing packet, comparison of single inked fingerprints to tenprint cards, and AFIS side-by-side comparisons of unknown to known fingerprints. The participant was expected to determine fingerprint patterns and compare the known fingerprints to the questioned fingerprints for a determination of identification or exclusion. The assigned values were as follows:

PART #1: PATTERN RECOGNITION

Image #	Pattern Type
1	Whorl
2	Right Slant Loop
3	Right Slant Loop
4	Arch
5	Right Slant Loop
6	Whorl
7	Right Slant Loop
8	Arch
9	Left Slant Loop
10	Right Slant Loop
11	Whorl
12	Whorl
13	Whorl
14	Right Slant Loop
15	Left Slant Loop
16	Whorl
17	Right Slant Loop
18	Left Slant Loop
19	Right Slant Loop
20	Right Slant Loop

PART #2: PRE-SENTENCING PACKET

The following are the fingerprints of the same person: (Select all that apply)

X Most Recent Conviction

X Prior Conviction #1

- Prior Conviction #2
- None of the tenprint cards bear the fingerprints of the same individual.
- Inconclusive

PART #3: Warrants of Removal/Deportation

What can you conclude about the fingerprint on Warrant #1?

*The fingerprint on Warrant #1 **WAS** made by the same person whose fingerprints appear on the fingerprint card bearing the name "Carlos Mariano".*

What can you conclude about the fingerprint on Warrant #2?

*The fingerprint on Warrant #2 **WAS NOT** made by the same person whose fingerprints appear on the fingerprint card bearing the name "Santino Navarro".*

PART #4: AFIS SIDE-BY-SIDE COMPARISONS

Comparison #	Conclusion
1	Exclusion
2	Identification
3	Exclusion
4	Identification
5	Identification

The assigned values below were determined through the ground truth information and verified through unanimous agreement during pre-distribution testing.

Individual reports will be provided to participants by early July 2022. The summary report for this test will be posted on the Ron Smith & Associates website by mid July 2022 using the following link: <http://www.ronsmithandassociates.com/proficiency/tenprintcomparison.html>

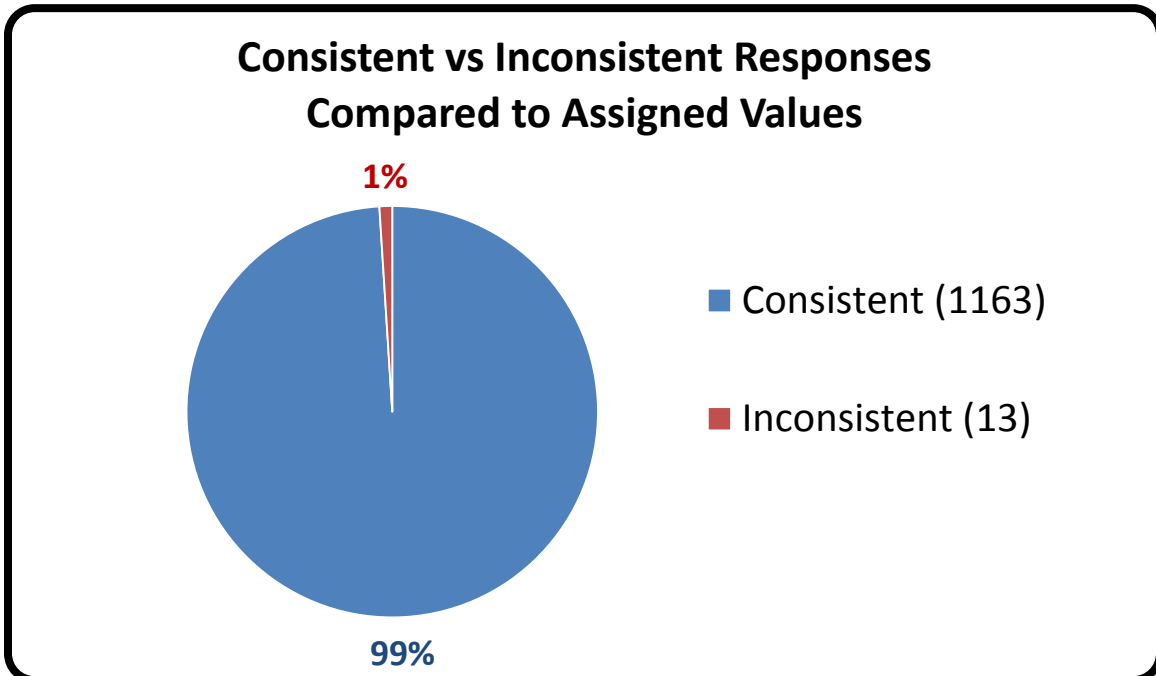
It is recommended to postpone evaluating an individual's performance until after you have received the statistical averages contained in the summary report.

For any questions or further information, contact our Proficiency Testing Coordinator by emailing testing@ronsmithandassociates.com or by calling toll free at 1-866-832-6772.

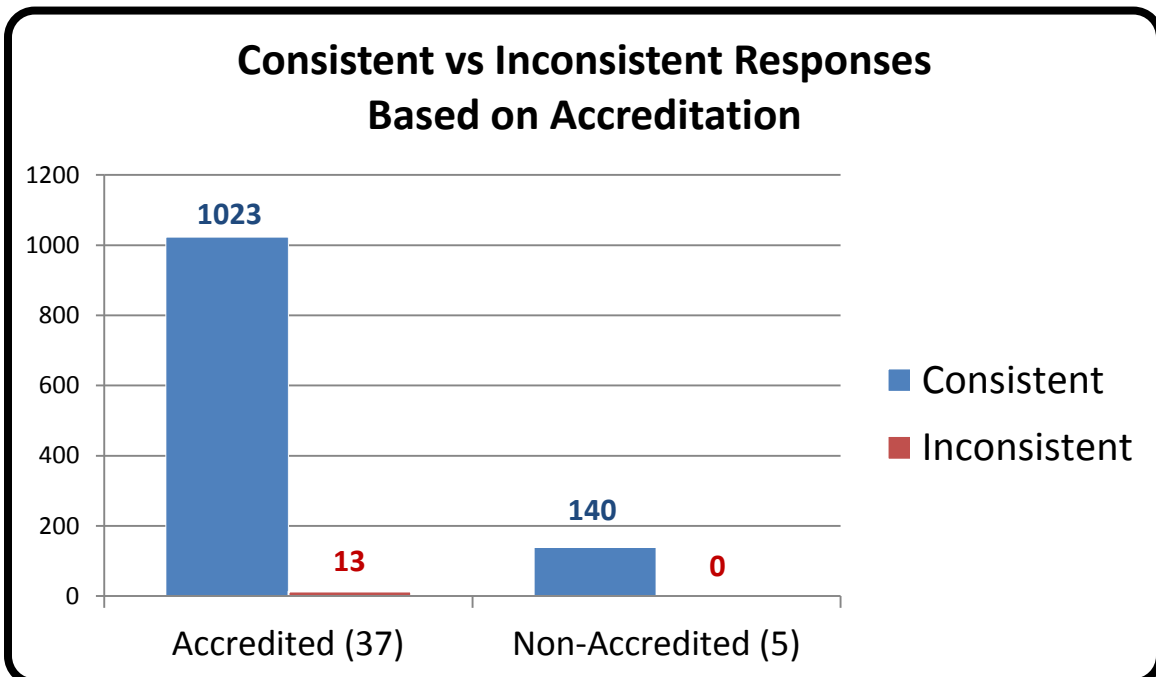
Authorized by: Ron Smith, President

Issue Date: June 29, 2022

Appendix 2



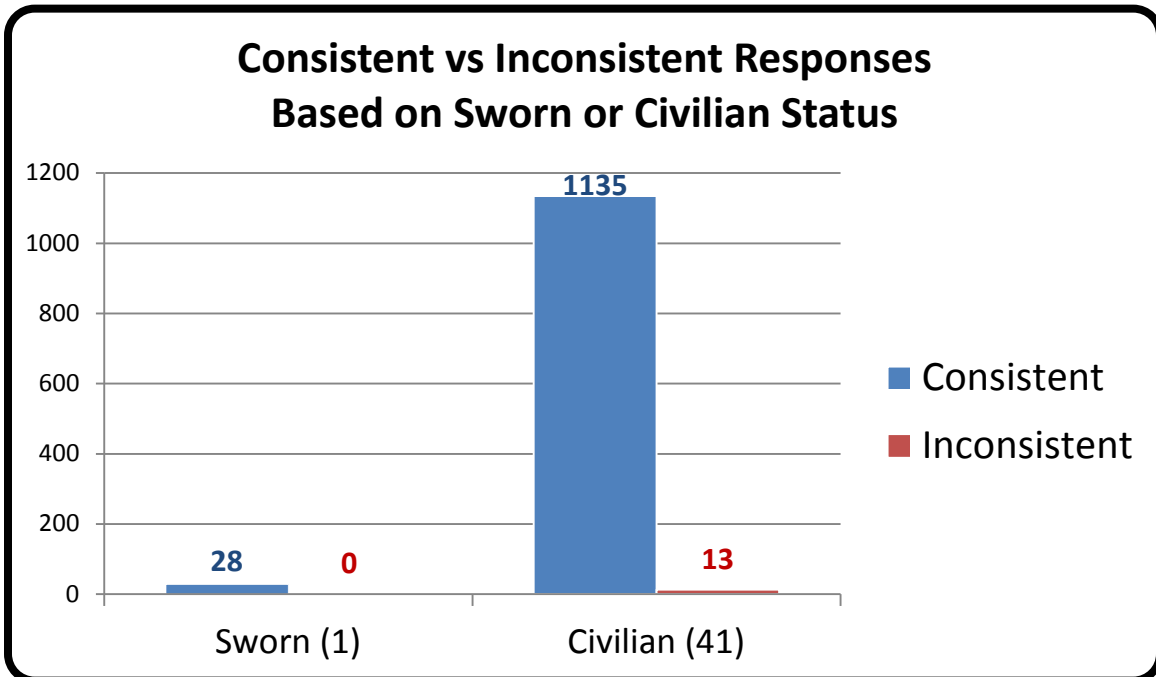
Appendix 3



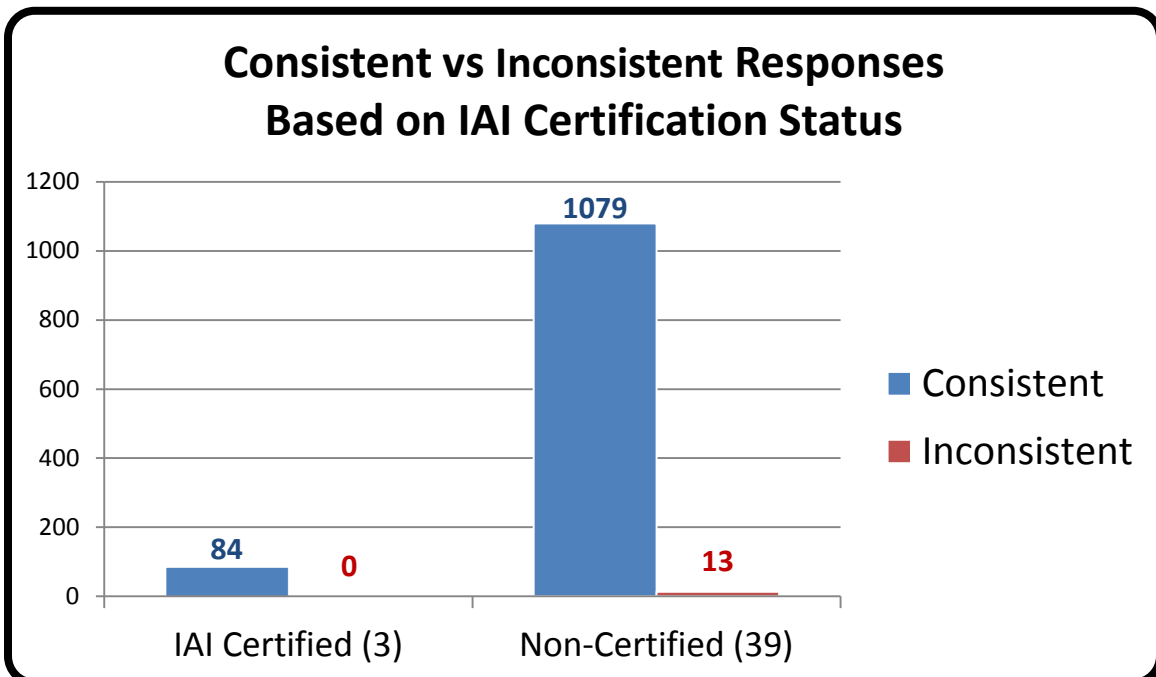
*Numerical values shown are based on 42 participant submissions, each with 28 responses, equaling 1176 total responses.

*For further information, please read *Manufacturer's Additional Observations* on the final page of this report.

Appendix 4



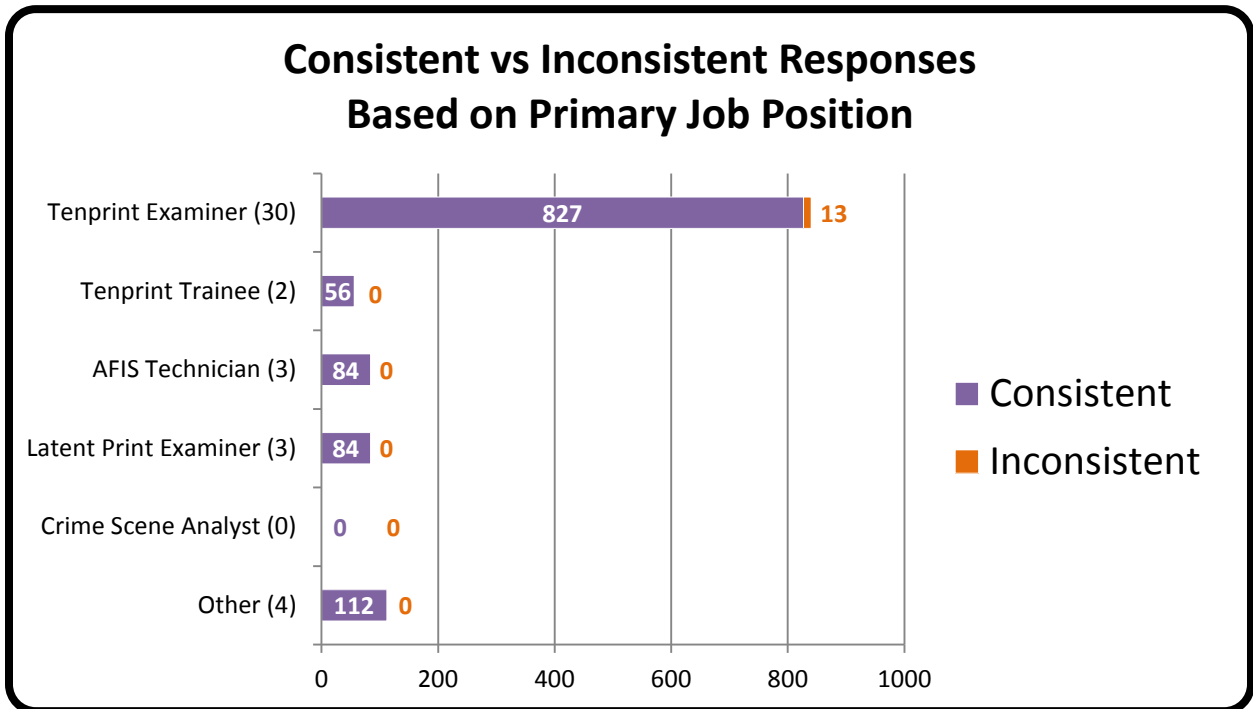
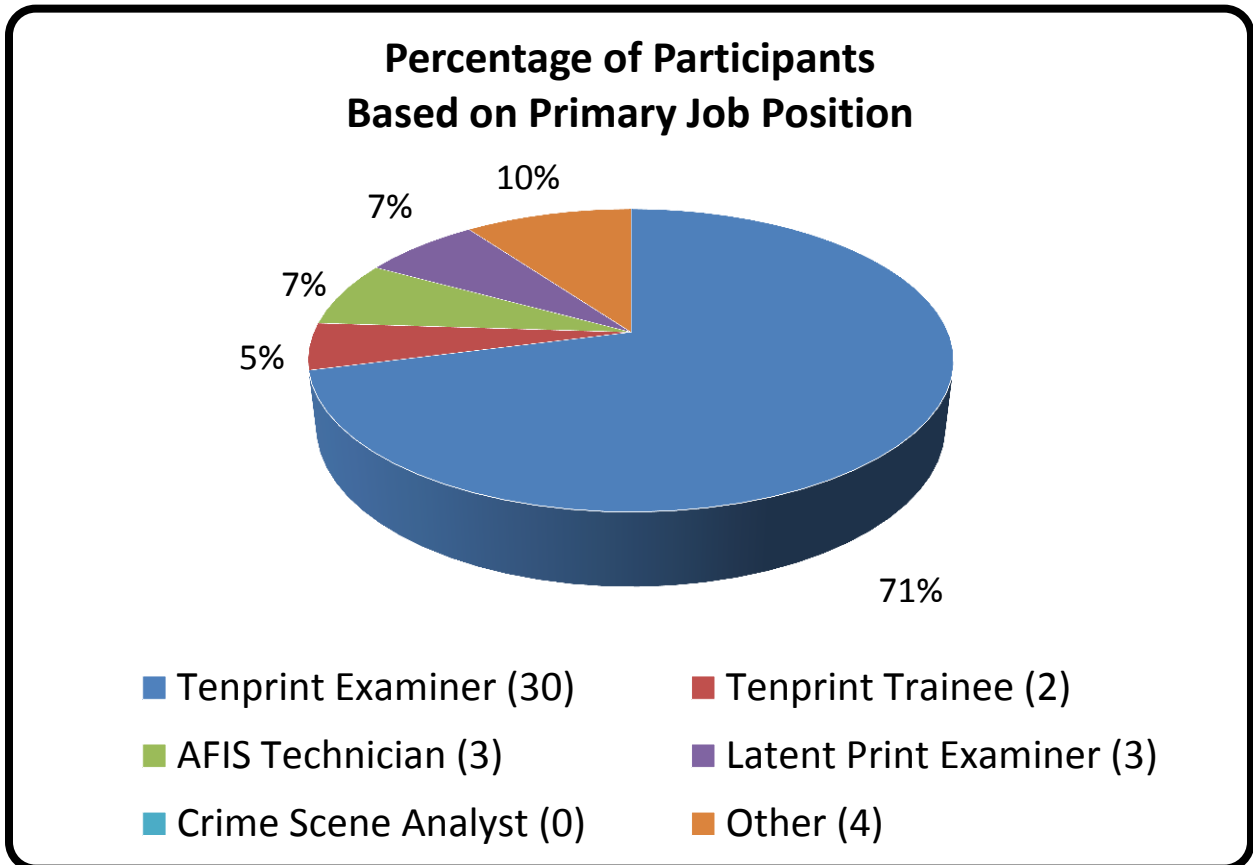
Appendix 5



*Numerical values shown are based on **42 participant submissions, each with 28 responses, equaling 1176 total responses.**

*For further information, please read **Manufacturer's Additional Observations** on the final page of this report.

Appendix 6

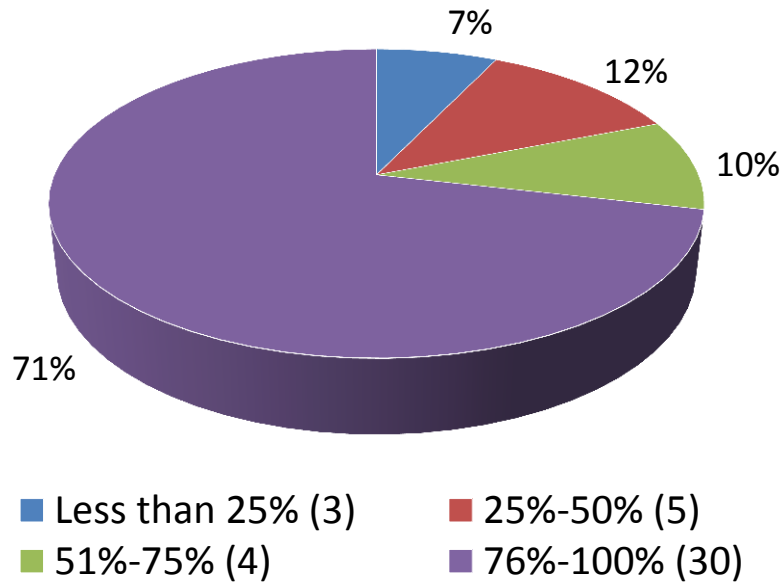


*Numerical values shown are based on **42 participant submissions, each with 28 responses, equaling 1176 total responses.**

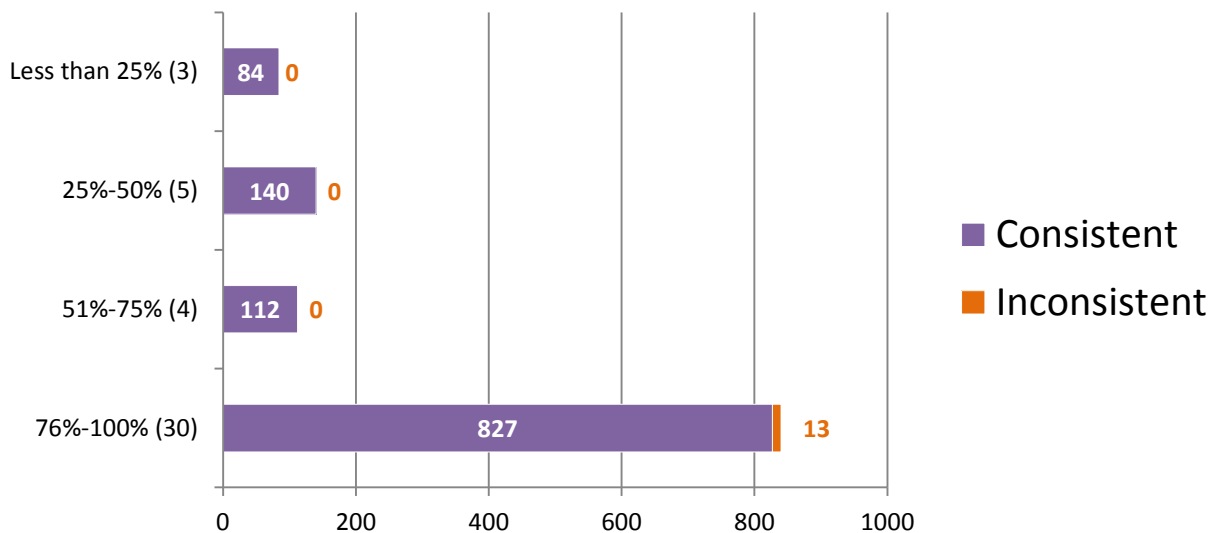
*For further information, please read **Manufacturer's Additional Observations** on the final page of this report.

Appendix 7

Percentage of Participants Based on Time Devoted to Tenprint Casework



Consistent vs Inconsistent Responses Based on Time Devoted to Tenprint Casework

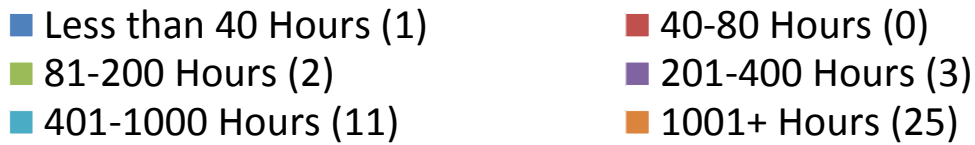
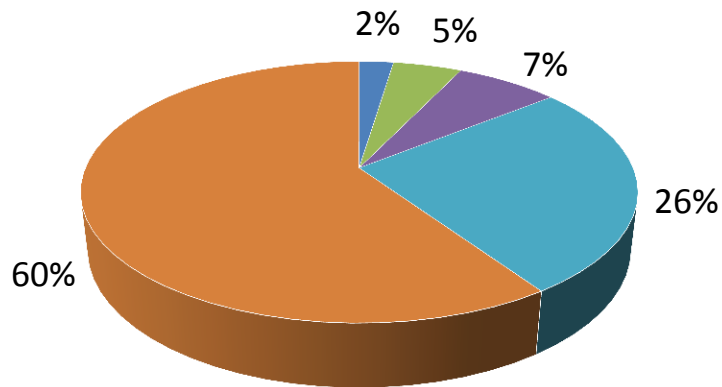


*Numerical values shown are based on **42 participant submissions, each with 28 responses, equaling 1176 total responses.**

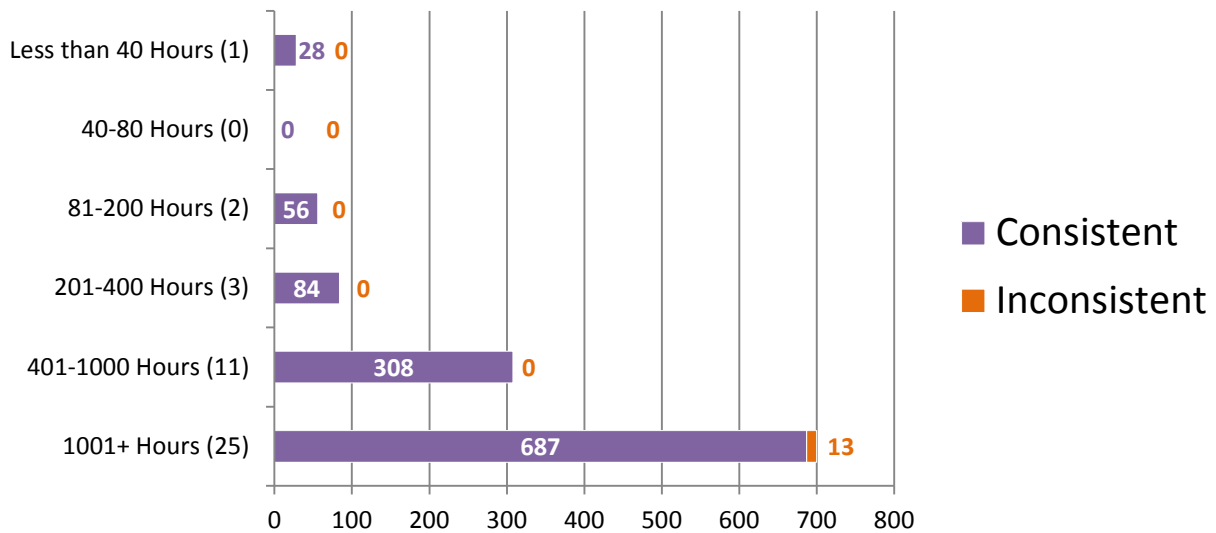
*For further information, please read **Manufacturer's Additional Observations** on the final page of this report.

Appendix 8

Percentage of Participants Based on Hours of Tenprint Training Completed



Consistent vs Inconsistent Responses Based on Hours of Tenprint Training Completed

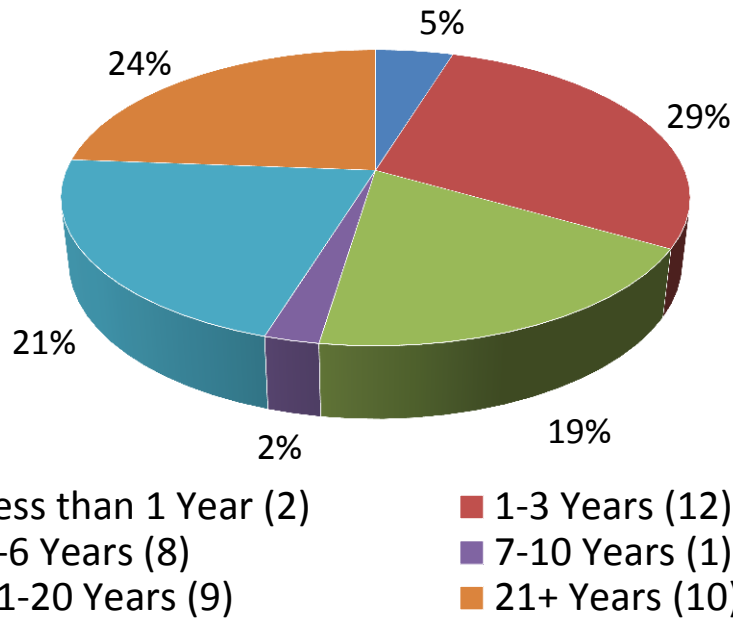


*Numerical values shown are based on **42 participant submissions, each with 28 responses, equaling 1176 total responses.**

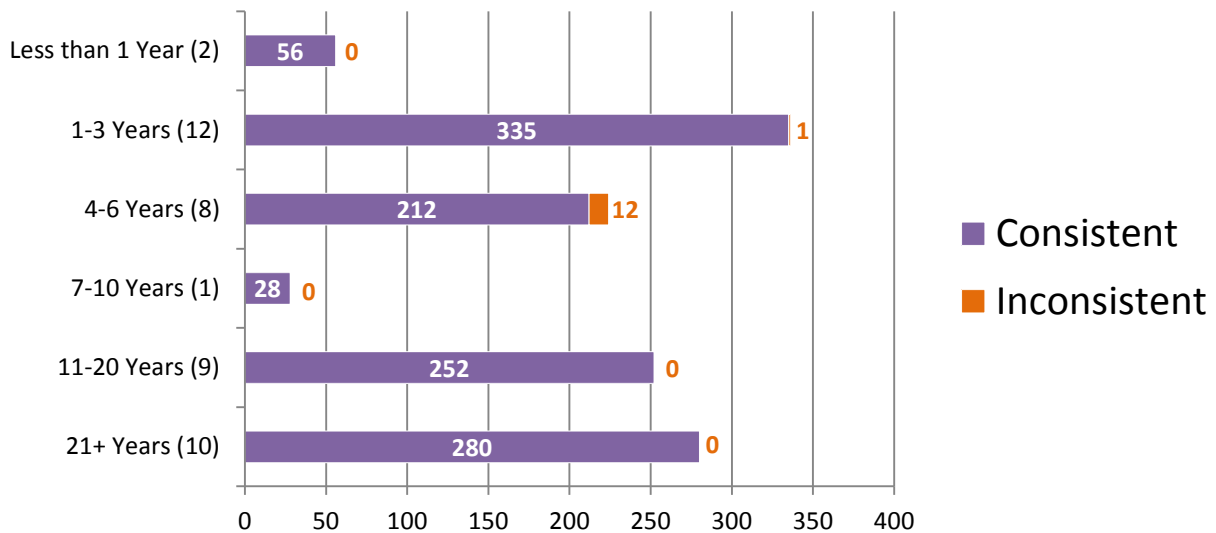
*For further information, please read **Manufacturer's Additional Observations** on the final page of this report.

Appendix 9

Percentage of Participants Based on Years of Experience in Tenprints



Consistent vs Inconsistent Responses Based on Years of Experience in Tenprints

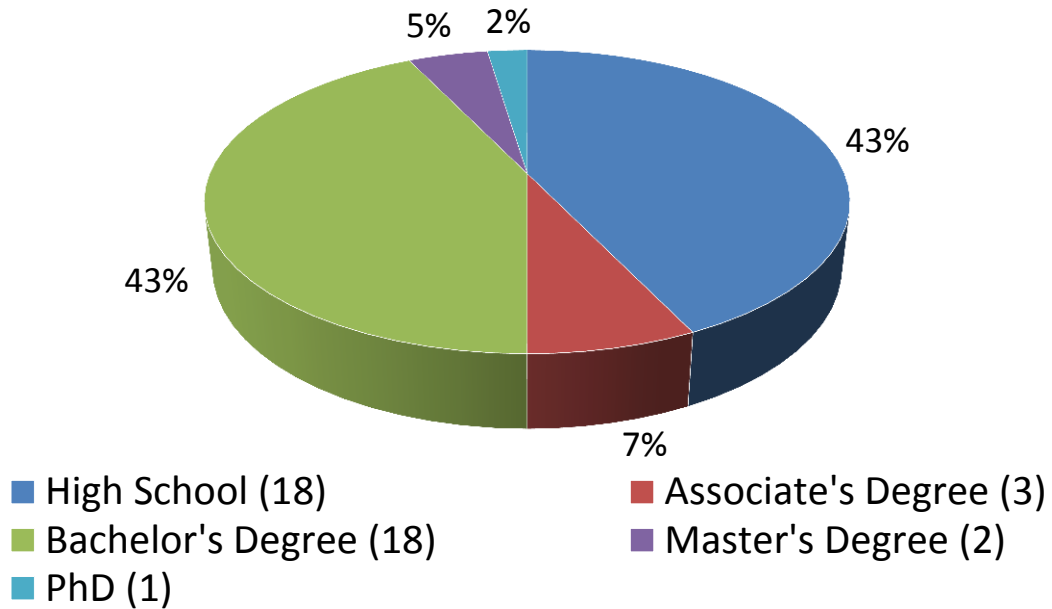


*Numerical values shown are based on **42 participant submissions, each with 28 responses, equaling 1176 total responses.**

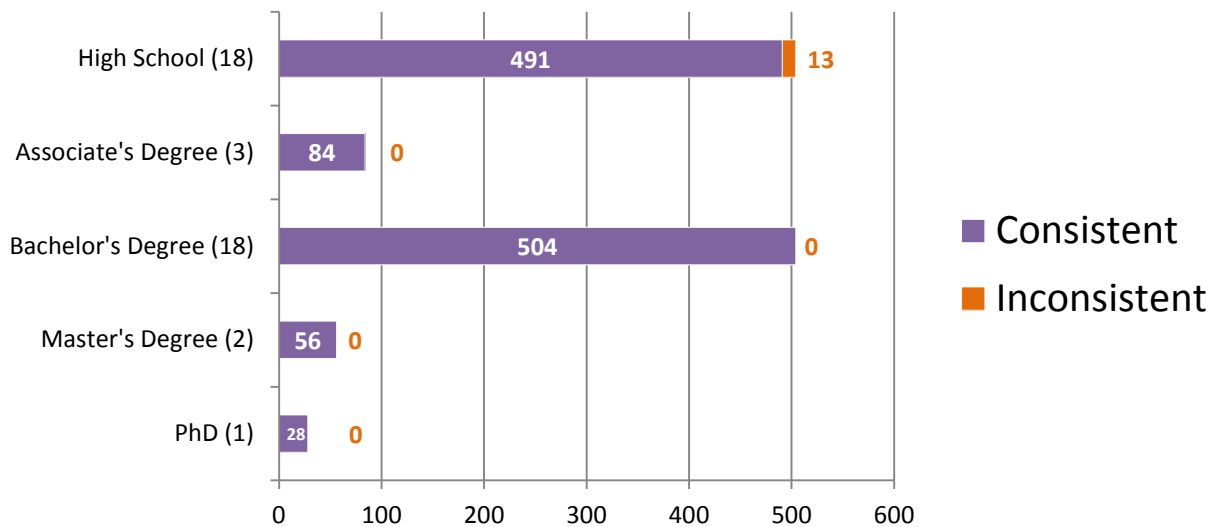
*For further information, please read **Manufacturer's Additional Observations** on the final page of this report.

Appendix 10

Percentage of Participants Based on Highest Level of Education Completed



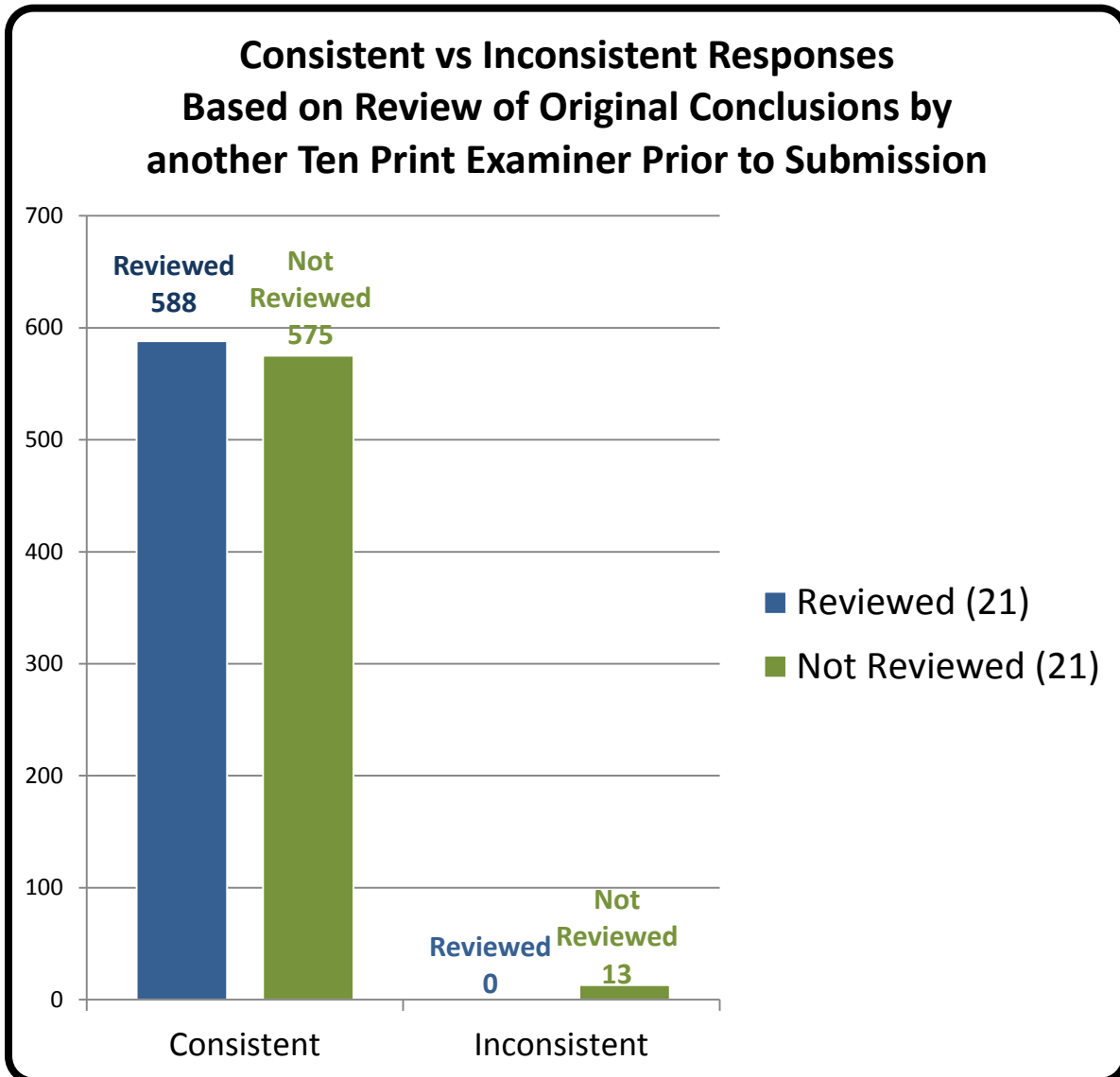
Consistent vs Inconsistent Responses Based on Highest Level of Education Completed



*Numerical values shown are based on **42 participant submissions, each with 28 responses, equaling 1176 total responses.**

*For further information, please read *Manufacturer's Additional Observations* on the final page of this report.

Appendix 11



*Numerical values shown are based on **42 participant submissions, each with 28 responses, equaling 1176 total responses.**

*For further information, please read *Manufacturer's Additional Observations* on the final page of this report.

Appendix 12

Participant Responses listed by Test Code

		Part 1																			
		1	2	3	4	5	6	7	8	9	10	11	12	13	14	15	16	17	18	19	20
Assigned Values		W	RSL	RSL	A	RSL	W	RSL	A	LSL	RSL	W	W	W	RSL	LSL	W	RSL	LSL	RSL	RSL
Test Code	2639G22201	W	RSL	RSL	A	RSL	W	RSL	A	LSL	RSL	W	W	W	RSL	LSL	W	RSL	LSL	RSL	RSL
	9318J22201	W	RSL	RSL	A	RSL	W	RSL	A	LSL	RSL	W	W	W	RSL	LSL	W	RSL	LSL	RSL	RSL
	4217P22201	W	RSL	RSL	A	RSL	W	RSL	A	LSL	RSL	W	W	W	RSL	LSL	W	RSL	LSL	RSL	RSL
	4122S22201	W	RSL	RSL	A	RSL	W	RSL	A	LSL	RSL	W	W	W	RSL	LSL	W	RSL	LSL	RSL	RSL

51R22201	W	RSL	RSL	A	RSL	W	RSL	A	LSL	RSL	W	W	W	RSL	LSL	W	RSL	LSL	RSL	RSL
330K22201	W	RSL	RSL	A	RSL	W	RSL	A	LSL	RSL	W	W	W	RSL	LSL	W	RSL	LSL	RSL	RSL
2935M22201	W	RSL	RSL	A	RSL	W	RSL	A	LSL	RSL	W	W	W	RSL	LSL	W	RSL	LSL	RSL	RSL
7780U22201	W	RSL	RSL	A	RSL	W	RSL	A	LSL	RSL	W	W	W	RSL	LSL	W	RSL	LSL	RSL	RSL
8775O22201	W	RSL	RSL	A	RSL	W	RSL	A	LSL	RSL	W	W	W	RSL	LSL	W	RSL	LSL	RSL	RSL
6995F22201	W	RSL	RSL	A	RSL	W	RSL	A	LSL	RSL	W	W	W	RSL	LSL	W	RSL	LSL	RSL	RSL
8211H22201	W	RSL	RSL	A	RSL	W	RSL	A	LSL	RSL	W	W	W	RSL	LSL	W	RSL	LSL	RSL	RSL
3825X22201	W	RSL	RSL	A	RSL	W	RSL	A	LSL	RSL	W	W	W	RSL	LSL	W	RSL	LSL	RSL	RSL
9355Z22201	W	RSL	RSL	A	RSL	W	RSL	A	LSL	RSL	W	W	W	RSL	LSL	W	RSL	LSL	RSL	RSL
9023K22201	W	RSL	RSL	A	RSL	W	RSL	A	LSL	RSL	W	W	W	RSL	LSL	W	RSL	LSL	RSL	RSL
3261P22201	W	RSL	RSL	A	RSL	W	RSL	A	LSL	RSL	W	W	W	RSL	LSL	W	RSL	LSL	RSL	RSL
7511C22201	W	RSL	RSL	A	RSL	W	RSL	A	LSL	RSL	W	W	W	RSL	LSL	W	RSL	LSL	RSL	RSL
8210C22201	W	RSL	RSL	A	RSL	W	RSL	A	LSL	RSL	W	W	W	RSL	LSL	W	RSL	LSL	RSL	RSL
7652G22201	W	RSL	RSL	A	RSL	W	RSL	A	LSL	RSL	W	W	W	RSL	LSL	W	RSL	LSL	RSL	RSL
4892N22201	W	RSL	RSL	A	RSL	W	RSL	A	LSL	RSL	W	W	W	RSL	LSL	W	RSL	LSL	RSL	RSL
4266I22201	W	RSL	RSL	A	RSL	W	RSL	A	LSL	RSL	W	W	W	RSL	LSL	W	RSL	LSL	RSL	RSL
5160G22201	W	RSL	RSL	A	RSL	W	RSL	A	LSL	RSL	W	W	W	RSL	LSL	W	RSL	LSL	RSL	RSL
987D22201	W	RSL	RSL	A	RSL	W	RSL	A	LSL	RSL	W	W	W	RSL	LSL	W	RSL	LSL	RSL	RSL
8035R22201	W	RSL	RSL	A	RSL	W	RSL	A	LSL	RSL	W	W	W	RSL	LSL	W	RSL	LSL	RSL	RSL
663T22201	W	RSL	RSL	A	RSL	W	RSL	A	LSL	RSL	W	W	W	RSL	LSL	W	RSL	LSL	RSL	RSL
8833J22201	W	RSL	RSL	A	RSL	W	RSL	A	LSL	RSL	W	W	W	RSL	LSL	W	RSL	LSL	RSL	RSL
6745N22201	W	RSL	RSL	A	RSL	W	RSL	A	LSL	RSL	W	W	W	RSL	LSL	W	RSL	LSL	RSL	RSL
5777J22201	W	RSL	RSL	A	RSL	W	RSL	A	LSL	RSL	W	W	LSL	RSL	LSL	W	RSL	LSL	RSL	RSL
3143U22201	W	RSL	RSL	A	RSL	W	RSL	A	LSL	RSL	W	W	W	RSL	LSL	W	RSL	LSL	RSL	RSL
5673N22201	W	RSL	RSL	A	RSL	W	RSL	A	LSL	RSL	W	W	W	RSL	LSL	W	RSL	LSL	RSL	RSL
1915D22201	W	RSL	RSL	A	RSL	W	RSL	A	LSL	RSL	W	W	W	RSL	LSL	W	RSL	LSL	RSL	RSL
3842U22201	W	RSL	RSL	A	RSL	W	RSL	A	LSL	RSL	W	W	W	RSL	LSL	W	RSL	LSL	RSL	RSL
8813V22201	W	RSL	RSL	A	RSL	W	RSL	A	LSL	RSL	W	W	W	RSL	LSL	W	RSL	LSL	RSL	RSL
1852Q22201	W	RSL	RSL	A	RSL	W	RSL	A	LSL	RSL	W	W	W	RSL	LSL	W	RSL	LSL	RSL	RSL
5325U22201	W	RSL	RSL	A	RSL	W	RSL	A	LSL	RSL	W	W	W	RSL	LSL	W	RSL	LSL	RSL	RSL
6056R22201	W	RSL	RSL	A	RSL	W	RSL	A	LSL	RSL	W	W	W	RSL	LSL	W	RSL	LSL	RSL	RSL
133R22201	W	RSL	RSL	A	RSL	W	RSL	A	LSL	RSL	W	W	W	RSL	LSL	W	RSL	LSL	RSL	RSL
5917O22201	W	RSL	RSL	A	RSL	W	RSL	A	LSL	RSL	W	W	W	RSL	LSL	W	RSL	LSL	RSL	RSL
169M22201	W	LSL	LSL	A	LSL	W	LSL	A	RSL	LSP	W	W	W	LSL	RSL	W	LSL	RSL	LSL	LSL
2795E22201	W	RSL	RSL	A	RSL	W	RSL	A	LSL	RSL	W	W	W	RSL	LSL	W	RSL	LSL	RSL	RSL
1590F22201	W	RSL	RSL	A	RSL	W	RSL	A	LSL	RSL	W	W	W	RSL	LSL	W	RSL	LSL	RSL	RSL
9640N22201	W	RSL	RSL	A	RSL	W	RSL	A	LSL	RSL	W	W	W	RSL	LSL	W	RSL	LSL	RSL	RSL
4885J22201	W	RSL	RSL	A	RSL	W	RSL	A	LSL	RSL	W	W	W	RSL	LSL	W	RSL	LSL	RSL	RSL

Test Code

	Part 2	Part 3		Part 4				
	Pre-Sentencing	Warrant #1	Warrant #2	1	2	3	4	5
<i>Assigned Values</i>	<i>MRC & PC1</i>	<i>WAS</i>	<i>WAS NOT</i>	<i>EXC</i>	<i>ID</i>	<i>EXC</i>	<i>ID</i>	<i>ID</i>
2639G22201	MRC & PC1	WAS	WAS NOT	EXC	ID	EXC	ID	ID
9318J22201	MRC & PC1	WAS	WAS NOT	EXC	ID	EXC	ID	ID
4217P22201	MRC & PC1	WAS	WAS NOT	EXC	ID	EXC	ID	ID
4122S22201	MRC & PC1	WAS	WAS NOT	EXC	ID	EXC	ID	ID
51R22201	MRC & PC1	WAS	WAS NOT	EXC	ID	EXC	ID	ID
330K22201	MRC & PC1	WAS	WAS NOT	EXC	ID	EXC	ID	ID
2935M22201	MRC & PC1	WAS	WAS NOT	EXC	ID	EXC	ID	ID
7780U22201	MRC & PC1	WAS	WAS NOT	EXC	ID	EXC	ID	ID
8775O22201	MRC & PC1	WAS	WAS NOT	EXC	ID	EXC	ID	ID
6995F22201	MRC & PC1	WAS	WAS NOT	EXC	ID	EXC	ID	ID
8211H22201	MRC & PC1	WAS	WAS NOT	EXC	ID	EXC	ID	ID
3825X22201	MRC & PC1	WAS	WAS NOT	EXC	ID	EXC	ID	ID
9355Z22201	MRC & PC1	WAS	WAS NOT	EXC	ID	EXC	ID	ID
9023K22201	MRC & PC1	WAS	WAS NOT	EXC	ID	EXC	ID	ID
3261P22201	MRC & PC1	WAS	WAS NOT	EXC	ID	EXC	ID	ID
7511C22201	MRC & PC1	WAS	WAS NOT	EXC	ID	EXC	ID	ID
8210C22201	MRC & PC1	WAS	WAS NOT	EXC	ID	EXC	ID	ID
7652G22201	MRC & PC1	WAS	WAS NOT	EXC	ID	EXC	ID	ID
4892N22201	MRC & PC1	WAS	WAS NOT	EXC	ID	EXC	ID	ID
4266I22201	MRC & PC1	WAS	WAS NOT	EXC	ID	EXC	ID	ID
5160G22201	MRC & PC1	WAS	WAS NOT	EXC	ID	EXC	ID	ID
987D22201	MRC & PC1	WAS	WAS NOT	EXC	ID	EXC	ID	ID
8035R22201	MRC & PC1	WAS	WAS NOT	EXC	ID	EXC	ID	ID
663T22201	MRC & PC1	WAS	WAS NOT	EXC	ID	EXC	ID	ID
8833J22201	MRC & PC1	WAS	WAS NOT	EXC	ID	EXC	ID	ID
6745N22201	MRC & PC1	WAS	WAS NOT	EXC	ID	EXC	ID	ID
5777J22201	MRC & PC1	WAS	WAS NOT	EXC	ID	EXC	ID	ID
3143U22201	MRC & PC1	WAS	WAS NOT	EXC	ID	EXC	ID	ID
5673N22201	MRC & PC1	WAS	WAS NOT	EXC	ID	EXC	ID	ID
1915D22201	MRC & PC1	WAS	WAS NOT	EXC	ID	EXC	ID	ID
3842U22201	MRC & PC1	WAS	WAS NOT	EXC	ID	EXC	ID	ID
8813V22201	MRC & PC1	WAS	WAS NOT	EXC	ID	EXC	ID	ID
1852Q22201	MRC & PC1	WAS	WAS NOT	EXC	ID	EXC	ID	ID
5325U22201	MRC & PC1	WAS	WAS NOT	EXC	ID	EXC	ID	ID
6056R22201	MRC & PC1	WAS	WAS NOT	EXC	ID	EXC	ID	ID
133R22201	MRC & PC1	WAS	WAS NOT	EXC	ID	EXC	ID	ID
5917O22201	MRC & PC1	WAS	WAS NOT	EXC	ID	EXC	ID	ID
169M22201	MRC & PC1	WAS	WAS NOT	EXC	ID	EXC	ID	ID
2795E22201	MRC & PC1	WAS	WAS NOT	EXC	ID	EXC	ID	ID

1590F22201	MRC & PC1	WAS	WAS NOT	EXC	ID	EXC	ID	ID
9640N22201	MRC & PC1	WAS	WAS NOT	EXC	ID	EXC	ID	ID
4885J22201	MRC & PC1	WAS	WAS NOT	EXC	ID	EXC	ID	ID

Arch=A, Right Slant Loop=RSL, Left Slant Loop=LSL, Whorl=W, Most Recent Conviction=MRC, Prior Conviction #1=PC1, Prior Conviction #2=PC2, Identification=ID, Exclusion=EXC, Inconclusive=INC, None of the above=None

Totals

	Part 1																			
	1	2	3	4	5	6	7	8	9	10	11	12	13	14	15	16	17	18	19	20
Assigned Values	W	RSL	RSL	A	RSL	W	RSL	A	LSL	RSL	W	W	W	RSL	LSL	W	RSL	LSL	RSL	RSL
Consistent Responses	42	41	41	42	41	42	41	42	41	41	42	42	41	41	41	42	41	41	41	41
Inconsistent Responses	0	1	1	0	1	0	1	0	1	1	0	0	1	1	1	0	1	1	1	1
Percentage of Consistent Responses	100%	98%	98%	100%	98%	100%	98%	100%	98%	98%	100%	100%	98%	98%	98%	100%	98%	98%	98%	98%

	Part 2	Part 3		Part 4				
	Pre-Sentencing	Warrant #1	Warrant #2	1	2	3	4	5
Assigned Values	MRC & PC1	WAS	WAS NOT	EXC	ID	EXC	ID	ID
Consistent Responses	42	42	42	42	42	42	42	42
Inconsistent Responses	0	0	0	0	0	0	0	0
Percentage of Consistent Responses	100%	100%	100%	100%	100%	100%	100%	100%

Participant's Additional Comments

Test Code	Comments
N/A	N/A

Manufacturer's Additional Observations

Based upon a review of the all submitted responses, the following observations were noted:

1. Regardless of accreditation status, civilian or sworn status, IAI certification status, primary job position, the amount of time devoted to Tenprint examination, the number of hours of formal training in Tenprint examination, the years of experience, the level of education or participants' having their responses reviewed prior to submission; participants performed equally well on the test.

Authorized by: Ron Smith,
Date of Issue: President July 14,
 2022